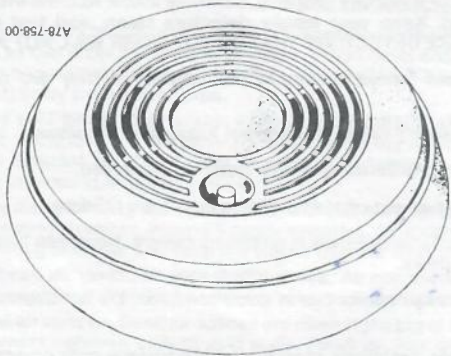




**BATTERY POWERED IONISATION  
SMOKE DETECTOR  
USER'S MANUAL  
MODELS 83R-UK, 83RI-UK**

A78-758-00



**BRK ELECTRONICS**

**IMPORTANT**  
PLEASE READ CAREFULLY AND SAVE  
This manual contains important information about the operation of this smoke detector. Purchasers who install this smoke detector for use by others must leave this manual or a copy of it with the user.

**FIVE YEAR GUARANTEE**  
**BRK Europe Ltd.** guarantees its enclosed Smoke Detector—but not the battery—to be free from defects in materials and workmanship under normal use and service for a period of five years from the date of purchase, as long as it has not been modified, altered, or a repair attempted. This guarantee does not affect a customer's statutory rights in any way.  
If you suspect the detector to be defective, return it, postage paid, to:  
Customer Service Dept.  
BRK Europe Ltd.  
4 The Paddock Hambridge Road  
Newbury, Berkshire  
RG14 5TQ

20H

**BRK Europe Ltd.**  
4 The Paddock Hambridge Road  
Newbury, Berkshire RG14 5TQ  
England

Rev. 12/93  
M05-403-12

**BASIC INFORMATION  
ABOUT YOUR SMOKE DETECTOR**

- Put smoke detectors outside of every bedroom area and on every floor of your home.
- Put the smoke detector as close to the centre of the ceiling as possible.
- The smoke detector may beep when you put the battery in it. If the indicator light on the smoke detector flashes once a minute, the smoke detector is receiving power from the battery.
- Test the smoke detector weekly by holding the test switch button in for about 10 seconds until the detector sounds. The detector may not sound immediately when you press the button.
- Replace battery if the smoke detector beeps once a minute.

**CONTENTS OF THIS MANUAL**

LIMITATIONS OF SMOKE DETECTORS:

|   |           |
|---|-----------|
| WHAT SMOKE DETECTORS CANNOT DO .....                            | 1         |
| WHAT THIS SMOKE DETECTOR CAN DO .....                           | 2         |
| WHERE SMOKE DETECTORS SHOULD BE PUT UP .....                    | 2         |
| WHERE SMOKE DETECTORS SHOULD NOT BE PUT UP .....                | 3         |
| HOW THIS SMOKE DETECTOR SHOULD BE PUT UP .....                  | 4         |
| HOW TO CONNECT DETECTORS TOGETHER .....                         | 5         |
| HOW TO TELL IF THE SMOKE DETECTOR IS WORKING PROPERLY .....     | 5         |
| HOW TO TAKE CARE OF AND TEST THIS SMOKE DETECTOR .....          | 6         |
| WHAT ELSE YOU CAN DO TO MAKE YOUR FAMILY SAFER FROM FIRES ..... | 6         |
| WHAT TO DO IF THERE IS A FIRE IN YOUR HOME .....                | 7         |
| GUARANTEE INFORMATION .....                                     | Back Page |

**WARNING**

**GENERAL LIMITATIONS OF SMOKE DETECTORS:  
WHAT SMOKE DETECTORS CANNOT DO**

Smoke detectors have played a key role in reducing home fire deaths in the United Kingdom and Europe. However, according to the Federal Emergency Management Agency (an agency of the U.S. Government), they may not go off or give early enough warning in as many as 35% of all fires. What are some reasons smoke detectors may not work?

**Smoke detectors will not work without power.** Battery operated smoke detectors will not work without batteries, if the batteries are dead, if the wrong kind of batteries are used, or if the batteries are put in wrong. AC powered smoke detectors will not work if the power supply is cut off for any reason. Some examples are a power failure at the power station, a failure along a power line, a failure of electrical switching devices in the home, an open fuse or circuit breaker, an electrical fire, or any other kind of fire that reaches the electrical system and burns the wires. If you are concerned about the limitations of either batteries or AC power for your smoke detectors, **install both types or AC smoke detectors with built-in battery backup (BRK Model 86RAC) for more security.**

**Smoke detectors will not sense fires which start where smoke does not reach the detector.** Smoke from fires in chimneys or walls, on roofs, or on the other side of closed doors may not reach your smoke detector and alarm it. If bedroom doors are usually closed at night, detectors should be put in each bedroom and the hallway between them.

**Smoke detectors may not sense a fire on another floor of a home.** For example, a second-floor detector may not sense a first-floor or basement fire. Therefore, **place smoke detectors on every floor of your home.**

**Smoke detectors may not be heard.** The loudness of the horn in your detector meets (or exceeds) current standards. However, **if the smoke detector is placed in a bedroom, it may not wake up a sound sleeper or one who has recently used drugs or has been drinking alcoholic beverages**, especially if the door is closed or only partly open. If the detector is placed on a different floor from the bedrooms, it is even less likely to wake up persons sleeping in the bedrooms. **Even persons who are awake may not hear a smoke detector** if the sound is blocked by distance or closed doors. Normal noise, such as traffic, stereo, radio, television, air conditioner, or other appliances may also prevent alert persons from hearing the alarm. **Smoke detectors may not be heard by persons who are hard of hearing.**

BRK Electronics recommends that smoke detectors be interconnected. In this way, the detector that alarms will cause all of the others to sound their alarms. This kind of system is more likely to awaken sleepers or alert persons in remote parts of the home. There are several ways to achieve a multiple-alarm system. You can install a professional fire detection system. You can interconnect smoke detectors that are designed to be linked together. Or, you can put in detection systems that use radio frequency transmitters and receivers.

**Smoke detectors are not fool-proof.** Like all other electronic devices, smoke detectors have limitations. Smoke detectors may not sense every kind of fire every time. They cannot be expected to sense dangerous fires caused by carelessness or safety hazards. They may not give early warning of fast-growing fires caused by smoking in bed, violent explosions, escaping gas, poor storage of flammable liquids, overloaded electrical circuits, children playing with matches or lighters, or persons who set fires on purpose.

**Smoke detectors are not a substitute for life or property insurance.** Though they have been responsible for saving many lives, BRK Electronics does not warrant or imply in any way that its detectors will protect lives and property in the event of a fire. Homeowners and renters should be sure to insure their lives and property.

**Smoke detectors have a limited life.** They contain many parts. Any of these parts could fail at any time. Therefore, you must test your smoke detector weekly. Clean and take care of it as described in this User's Manual. Be sure to have it repaired or replaced when it fails to test properly. In no case should a smoke detector be used for more than 10 years.

## WHAT THIS SMOKE DETECTOR CAN DO

This smoke detector is battery powered. It is designed to sense smoke that comes into its sensing chamber. It does not sense gas, heat, or flame.

This smoke detector is designed to give early warning of developing fires at a reasonable cost. This smoke detector monitors the air. When it senses smoke, it sounds its built-in alarm horn. It can provide precious time for you and your family to escape before a fire spreads. Such early warning is only possible, however, if the smoke detector is located, installed, and maintained as described in this User's Manual.

**WARNING** This smoke detector is designed for use in a single residential living unit only. In other words, it should be used inside a single-family home or apartment. It is not meant to be used in lobbies, hallways, basements, or another apartment in multi-family buildings, unless there are already working smoke detectors in each family unit. Smoke detectors placed in common areas outside of the individual living unit (such as on porches or in hallways) may not provide early warning to residents. In multi-family buildings, each family living unit should have its own smoke detectors.

Smoke detectors designed to be linked together should be interconnected within one family living unit only. If smoke detectors are interconnected between living units, nuisance alarms will occur in other units when smoke detectors are tested.

**WARNING** This smoke detector is not meant to be used in non-residential buildings. Warehouses, industrial or commercial buildings, and special purpose non-residential buildings require special fire detection and alarm systems.

This smoke detector alone is not a suitable substitute for complete fire-detection systems in places which house many people, like hotels or motels. The same is true of dormitories, hospitals, nursing homes, or group homes of any kind, even if they were once single family homes.

**WARNING** This smoke detector will not alert people who are hard of hearing. We recommend that you install special-purpose smoke detectors that use lights or vibrating devices to alert occupants who are hard of hearing.

## WHERE SMOKE DETECTORS SHOULD BE PUT UP

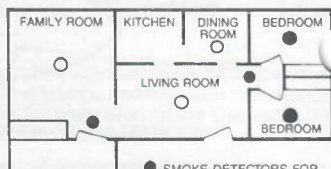
For complete coverage in residential units, smoke detectors should be installed in all rooms, halls, storage areas, basements, and attics in each family living unit. Minimum coverage is one smoke detector on each floor, one in each bedroom, and one in each sleeping area. However, we suggest that you:

- Put a smoke detector in the hallway outside every separate bedroom area. See Figure 1. Two smoke detectors are required in homes with two bedroom areas. See Figure 2.
- Put a smoke detector on every floor of a multi-floor home or apartment. See Figure 3.
- Put a smoke detector inside every bedroom.
- Put a smoke detector inside rooms where electrical appliances (such as portable heaters or humidifiers) are used.



● SMOKE DETECTORS FOR MINIMUM SECURITY  
○ SMOKE DETECTORS FOR MORE SECURITY

A78-1240-00



● SMOKE DETECTORS FOR MINIMUM SECURITY  
○ SMOKE DETECTORS FOR MORE SECURITY

A78-1240-01

Figure 1: SMOKE DETECTOR LOCATIONS FOR SINGLE-FLOOR RESIDENCE WITH ONLY ONE SLEEPING AREA.

Figure 2: SMOKE DETECTOR LOCATIONS FOR SINGLE-FLOOR RESIDENCE WITH MORE THAN ONE SLEEPING AREA.

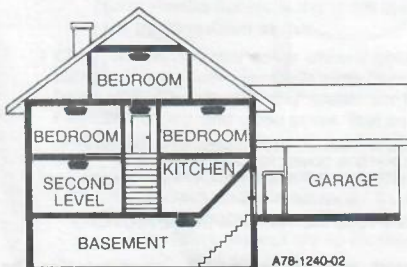


Figure 3: SMOKE DETECTOR LOCATIONS FOR A MULTI-FLOOR RESIDENCE.

- Put a smoke detector inside every room where someone sleeps with the door partly or completely closed. Smoke could be blocked by the closed door. Also, a hallway detector may not wake up the sleeper if the door is closed.
- Put smoke detectors at both ends of a bedroom hallway if the hallway is more than 12 metres (40 feet) long.
- Put basement smoke detectors at the bottom of the basement stairwell.
- Put second-floor smoke detectors at the top of the first-to-second floor stairwell. Be sure no door or other obstruction blocks the path of smoke to the smoke detector.
- Put additional smoke detectors in your living room, dining room, family room, attic, utility and storage rooms.
- Put smoke detectors as close to the centre of the ceiling as possible. If this is not practical, put the smoke detector on the ceiling, no closer than 10 cm (4 inches) from any wall or corner. See Figure 4.
- If ceiling mounting is not possible, wall-mount smoke detectors between 10 and 15 cm (4 and 6 inches) from the ceiling. See Figure 4.
- Some rooms have sloped, peaked, or gabled ceilings. If yours do, mount smoke detectors 0.9 metre (3 feet) - measured horizontally - from the highest point of the ceiling. See Figure 5.

We recommend complete coverage and the use of additional smoke detectors.

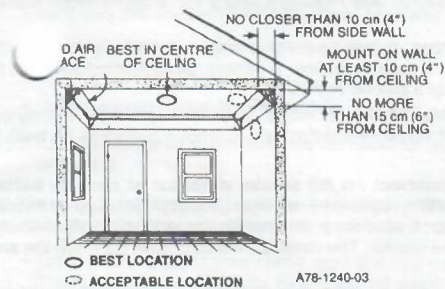
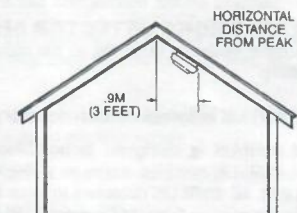


Figure 4: RECOMMENDED SMOKE DETECTOR MOUNTING LOCATIONS.



A78-1240-04

Figure 5: RECOMMENDED SMOKE DETECTOR LOCATION IN ROOMS WITH SLOPED, GABLED, OR PEAKED CEILINGS.

## WHERE SMOKE DETECTORS SHOULD NOT BE PUT UP

Nuisance alarms occur when smoke detectors are put up where they will not work properly. To avoid nuisance alarms, do not place smoke detectors:

- In or near areas where combustion particles are present. (Combustion particles are the by-products of something that is burning.) Areas to avoid include kitchens with few windows or poor ventilation, garages where there may be vehicle exhaust, near furnaces, hot water heaters, and space heaters.
- Put up smoke detectors at least 6 metres (20 feet) away from places where combustion particles are normally present. If a 6 metre distance is not possible, put the smoke detector as far away from the combustion particles as possible. To prevent nuisance alarms, provide good ventilation in such places.

- In air streams passing by kitchens. Figure 6 shows how a smoke detector can sense combustion products in normal air-flow paths. The picture shows how to correct this problem.

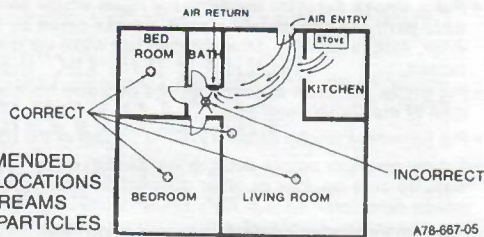


Figure 6: RECOMMENDED SMOKE DETECTOR LOCATIONS TO AVOID AIR STREAMS WITH COMBUSTION-PARTICLES

A7B-687-05

- In damp or very humid areas, or near bathrooms with showers. Moisture in humid air can enter the sensing chamber. It then cools and turns into droplets which can cause nuisance alarms. Put up smoke detectors at least 3 metres (10 feet) away from bathrooms.
- In very cold or very hot areas, including unheated buildings or outdoor rooms. If the temperature goes above or below the operating range of your smoke detector, it will not work properly. The temperature range for your smoke detector is 4° to 38°C (40° to 100°F).
- In very dusty or dirty areas. Dirt and dust can build up on the smoke detector's sensing chamber, making it overly sensitive. Or, it can block openings to the sensing chamber and keep the smoke detector from sensing smoke.
- Near fresh air vents, or very drafty areas. Air conditioners, heaters, fans, fresh air vents, and drafts can drive smoke away from smoke detectors.
- In dead air spaces. Dead air spaces are often at the top of a peaked roof, or in the corners between ceilings and walls. Dead air may prevent smoke from reaching a smoke detector. See Figures 4 and 5 for recommended mounting locations.
- In insect-infested areas. If insects enter a smoke detector's sensing chamber, they may cause a nuisance alarm. Where bugs are a problem, get rid of them before putting up a smoke detector.
- Near fluorescent lights. Electrical "noise" from fluorescent lights may cause nuisance alarms. Put up smoke detectors at least 1.5 metres (5 feet) from such lights.

**WARNING** Never disconnect an AC smoke detector or remove batteries from a battery-operated smoke detector to stop a nuisance alarm. Open a window or fan the air around the smoke detector to get rid of the smoke. The detector will turn itself off when the smoke is gone.

**WARNING** Do not stand close to the smoke detector when the detector is sounding. The detector is loud in order to wake you in an emergency. Too much exposure to the horn at close range may be harmful to your hearing.

### HOW THIS SMOKE DETECTOR SHOULD BE PUT UP

- This smoke detector is made to be mounted on the ceiling, or on the wall if necessary.
- Model 83R-UK is a single-station detector that cannot be linked to other detectors.
- Model 83RI-UK is designed to be interconnected with other 83RI-UK detectors. Model 83RI-UK can also serve as a single-station, stand-alone unit. We recommend that all 83RI-UK detectors in your home be interconnected. Follow directions in the section "How to Connect 83RI-UK Detectors Together" below.
- Before installing this smoke detector, read "Where Smoke Detectors Should Be Put Up" and "Where Smoke Detectors Should Not Be Put Up." Then decide where to put up this smoke detector.

#### To put up your smoke detector, follow these steps:

1. Open the cover by holding the base firmly and pulling up on the cover tab or arrow marked "OPEN HERE".

**NOTE:** The detector's hinged cover may unsnap from the base if it is opened too far. This will not damage the detector; simply snap the cover hinge back onto the base if this happens.

2. Put the detector base against the ceiling (or wall) where you want the detector to be. With a pencil, trace around the inside of two of the keyhole-shaped slots used for mounting, as shown in Figure 7.

**IMPORTANT:** For wall mounting, position the detector with the test button at the bottom where it will be easiest to reach.

3. Put the detector where it won't get dust on it from the holes to be drilled in the ceiling (or wall).
4. Using a 5mm (3/16-inch) drill bit, drill holes in the centres of the smaller ends of the two keyhole slots outlined on the ceiling (or wall).
5. Push the plastic plugs (in the package with the screws) into the holes so that the tops are flat against the ceiling (or wall).
6. Screw the two screws all the way into the plugs, then unscrew each of the screws two full turns.

**NOTE:** If the detector is to be connected to other detectors, read and follow the instructions in the section on "How To Connect Detectors Together" before you finish installing the detector.

7. Put the detector base back on the ceiling (or wall), so that the large ends of the keyhole slots slip over the screw heads. Then carefully slide the base so that the small ends of the keyhole slots are around the heads of the screws.
8. Tighten the screws.

#### Open the detector cover and install the battery as follows:

**CAUTION** This smoke detector comes with cover latches that will prevent the smoke detector cover from closing if a battery is not installed. This is to warn you that the smoke detector will not work until a new battery is installed. If you mount the detector on a wall, be sure the test button is at the bottom or this feature will not work properly.

1. Match the terminals on the end of the battery with the terminal connections in the detector. (One terminal is smaller than the other so the battery will only fit one way.)
2. When the terminals are matched, push the battery firmly in until it snaps and cannot be shaken loose.

**NOTE:** When the smoke detector battery first makes contact with the smoke detector, the detector horn may sound for a second. This is normal and means that the battery is positioned properly. Close cover, then press test switch, holding it down for about 10 seconds until the horn sounds. The horn should sound a loud, pulsating alarm. This means the unit is working properly.

**WARNING** Do not connect Model 83R-UK smoke detectors to any other detector or auxiliary device. Connecting anything else to this smoke detector will keep it from working properly.

### HOW TO CONNECT DETECTORS TOGETHER

Up to 12 Model 83RI-UK detectors may be connected together so that if one detector senses smoke, all of them will sound an alarm. Low Battery signals will sound only in a detector that needs a new battery, however.

**NOTE:** Model 83R-UK cannot be interconnected.

Connect the detectors together by connecting all the terminals marked #1 on the interconnect terminal block together, and all the terminals marked #2 on the interconnect terminal block together. Wires inserted into the terminal block should have 5-8mm of insulation stripped off. (See Figures 7 and 8.) Use 1.0mm<sup>2</sup> or larger two-conductor cable which is available at any ironmonger or home centre.

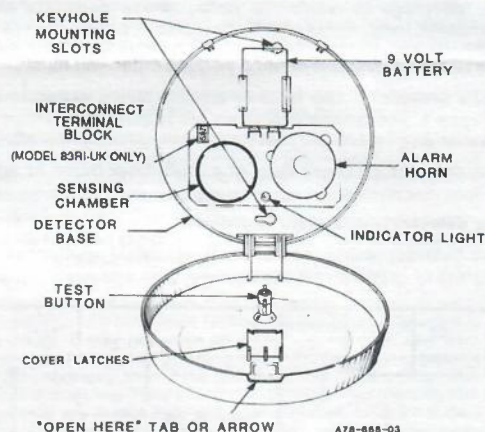


Figure 7: SMOKE DETECTOR WITH COVER OPEN

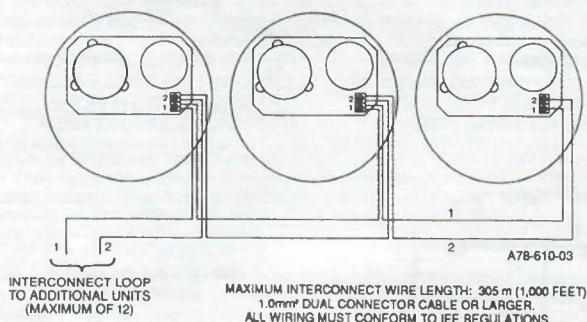


Figure 8: INTERCONNECTING MODEL 83RI-UK DETECTORS

After you interconnect the detectors, push the test switch on one detector. The alarm horns on all of the detectors should sound if they are connected correctly. Repeat this test for each interconnected detector.

**WARNING** This detector is not designed to be connected to anything except other Model 83RI-UK detectors. Connecting any other alarm or auxiliary device to these detectors will keep them from working properly.

If a Model 83RI-UK detector is not going to be interconnected to other detectors, do not connect anything to the interconnect terminal block.

### HOW TO TELL IF THE SMOKE DETECTOR IS WORKING PROPERLY

Test the smoke detector weekly by pushing firmly on test button until the horn sounds. This should take 10 seconds. If the detector horn makes a continuous loud sound the smoke detector is working properly. **THIS IS THE ONLY WAY TO BE SURE THAT THE SMOKE DETECTOR IS WORKING. TEST THE SMOKE DETECTOR WEEKLY. IF THE DETECTOR FAILS TO TEST PROPERLY, HAVE IT REPAIRED OR REPLACED IMMEDIATELY.**

**WARNING** Never use an open flame of any kind to test your smoke detector. You may set fire to and damage the smoke detector, as well as your home. The built-in test switch accurately tests all smoke detector functions. It is the only correct way to test.

**ANGER** If the detector horn sounds a loud continuous sound and you have NOT pushed the test button, the smoke detector has sensed smoke or combustion particles in the air. **THE DETECTOR HORN IS A WARNING OF A POSSIBLY SERIOUS SITUATION. IT REQUIRES YOUR IMMEDIATE ATTENTION.**

- The alarm could be caused by a nuisance situation. Cooking smoke or a dusty furnace, sometimes called "friendly fires," can cause the detector horn to sound. If this happens, open a window or fan the air to remove the smoke or dust. The detector will turn off as soon as the air is completely clear. **DO NOT DISCONNECT THE BATTERY. THIS WILL REMOVE YOUR PROTECTION.**
- If the detector horn begins to beep once a minute, the smoke detector's battery is weak. **REPLACE IT IMMEDIATELY.** Keep fresh batteries on hand for this purpose.

Your smoke detector has a flashing red indicator light (LED) which you can see through the clear push button of the test switch. If the light flashes once a minute, it means the smoke detector is receiving power from the battery. The light flashes very quickly when the smoke detector is in alarm.

**NOTE:** For interconnected Model 83RI-UK detectors only)

When interconnected Model 83RI-UK detectors go into alarm, the indicator light will flash quickly only on the detector sensing smoke. Indicator light will be off on all other detectors.

### HOW TO TAKE CARE OF AND TEST THIS SMOKE DETECTOR

Your smoke detector has been designed to be as maintenance-free as possible. To keep your smoke detector in good working order, you must:

- Test the smoke detector weekly. (See section "How to Tell if the Smoke Detector Is Working Properly.")
- Replace the smoke detector battery once a year or immediately when the low battery "beep" signal sounds once a minute.

**NOTE:** For best performance, First Alert recommends that you use First Alert alkaline batteries (Model FB2). If you cannot obtain a First Alert battery, the following batteries are also acceptable for proper operation: Eveready #522, #1222, #216; Duracell #MN1604; Gold Peak #1604P. The following batteries will last up to two years: First Alert FB2, Eveready #522, #1222, and Duracell #MN1604. **Do not use any other type of battery.** This smoke detector may not operate properly with other batteries.

**NOTE:** Any Eveready batteries supplied with this product have been imported into the United Kingdom and Europe under license from Berec Group Limited and their subsidiaries, proprietors of the Eveready trademark registrations in the United Kingdom and Europe.

Open the cover and vacuum dust off the smoke detector's sensing chamber at least once a year. This can be done when you open the smoke detector to change the battery. **Remove battery before cleaning.** To clean smoke detector, use soft brush attachment to your vacuum. Carefully remove any dust on smoke detector components, especially on the openings of the sensing chamber. Replace battery after cleaning. Test smoke detector to make sure battery is in correctly.

**NOTE:** If you have repeated nuisance alarms, check the smoke detector's location. Refer to "Where Smoke Detectors Should Not Be Put Up." **Move your smoke detector if it is not located properly. Clean smoke detector as described above.**

- Clean smoke detector cover when it gets dirty. First, open cover and remove battery. Hand-wash cover with cloth dampened with clean water. Dry with lint-free cloth. **Do not get any water on the smoke detector components.** Replace battery, and close cover. Test smoke detector to make sure battery is in correctly.

**WARNING** If the smoke detector does not work properly, make sure the battery is fresh and is in correctly. Be sure the inside of the smoke detector and the openings to the sensing chamber are clean. If there is still a problem, **do not try to fix the smoke detector yourself.** This will void your guarantee.

Send smoke detector, shipping prepaid, to Customer Service Department, BRK Europe Ltd., 4 The Paddock Hambridge Road, Newbury, Berkshire RG14 5TQ,

England. Enclose a note in the package describing what is wrong with the smoke detector. See the guarantee information at the end of this manual.

### WHAT ELSE YOU CAN DO TO MAKE YOUR FAMILY SAFER FROM FIRES

Putting up smoke detectors is only one step in protecting your family from fires. You must also reduce the chances that fires will start in your home. And you must increase your chances of escaping safely if one does start. To have a good fire safety program you must:

a. **Put up smoke detectors properly. Carefully follow ALL the instructions in this manual. Keep your smoke detectors clean, and test them every week. SMOKE DETECTORS THAT DO NOT WORK WILL NOT ALERT YOU.**

b. **Replace your smoke detectors immediately if they are not working properly.**

c. **Follow fire safety rules, and prevent hazardous situations:**

- Use smoking materials properly. Never smoke in bed.
- Keep matches and cigarette lighters away from children.
- Store flammable materials in proper containers. Never use them near open flame or sparks.
- Keep electrical appliances in good condition. Do not overload electrical circuits.
- Keep stoves, fireplaces, chimneys, and barbeque grills grease free. Make sure they are properly installed, away from any combustible materials.
- Keep portable heaters and open flames such as candles away from combustible materials.
- Do not allow rubbish to accumulate.
- Keep a supply of extra batteries on hand for your battery powered smoke detectors.

d. **Develop a family escape plan and practice it with your entire family. Be sure to include small children in your practice.**

- Draw a floor plan of your home, and find two ways to exit from each room. There should be one way to get out of each bedroom without opening the door.
- Explain to children what the smoke detector signal means. Teach them that they must be prepared to leave the home by themselves if necessary. Show them how to check to see if doors are hot before opening them. Show them how to stay close to the floor and crawl if necessary. Show them how to use the alternate exit if the door is hot and should not be opened.
- Decide on a meeting place a safe distance from your house. Make sure that all your children understand that they should go and wait for you there if there is a fire.
- Hold fire drills at least every 6 months to make sure that everyone, even small children, knows what to do to escape safely.
- Know where to go to call the Fire Brigade from outside your home.
- Provide emergency equipment, such as BRK fire extinguishers, and teach your family to use this equipment properly.

### WHAT TO DO IF THERE IS A FIRE IN YOUR HOME

If you have made a family escape plan and practiced it with your family, you have increased their chances of escaping safely. Go over the following rules with your children each time you have fire drills. This will help everyone remember them in case of a real fire emergency.

- Don't panic. Stay calm.** Your safe escape may depend on thinking clearly and remembering what you have practiced.
- Get out of the house as quickly as possible.** Follow a planned escape route. Do not stop to collect anything or to get dressed.
- Feel the doors to see if they are hot.** If they are not, open them carefully. **Do not open a door if it is hot.** Use an alternate escape route.
- Stay close to the floor. Smoke and hot gases rise.**
- Cover your nose and mouth with a cloth. (Wet it if possible.)** Take short, shallow breaths.
- Keep doors and windows closed. Open them only if you have to in order to escape.**
- Meet at your planned meeting place after leaving the house.**
- Call the Fire Brigade as soon as possible from outside your house.** Give the address and your name.
- Never go back inside a burning building.**

Contact your local Fire Brigade. They will give you more ideas about how to make your home safer from fires and how to plan your family's escape.